

TECHNICAL DATA SHEET

EXTERNAL CAST STONE WINDOW SILL

PRODUCT DESCRIPTION

CMS Danskin Acoustics External Cast Stone Window Sills are manufactured using high quality crushed rock fines and a blend of sands giving the appearance of natural stone.

BENEFITS

- Lighter weight profile
- Available in either full lengths (1.5m & 900mm) or cut to bespoke sizes
- High quality, through colour to suit the project: Light Grey, Dark Grey or Brown
- Standard widths: 165mm & 190mm
- Easy to cut
- Repair mixes available
- Request a sample pack today

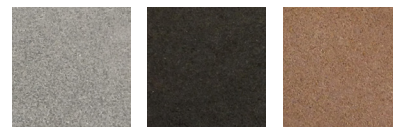
CUTTING

External Cast Stone Window Sills should be cut with a diamond tipped masonry blade which should ideally be water fed. Once cut, all units should be washed down to remove any excess dust. Due regard should be given to protecting the operative in accordance with current Health & Safety considerations for dust suppression and elimination in the workplace.

Alternatively CMS Danskin Acoustics offer a cut to size service from the manufacturing factory in Wishaw, Scotland.



COLOURS



Light Grey

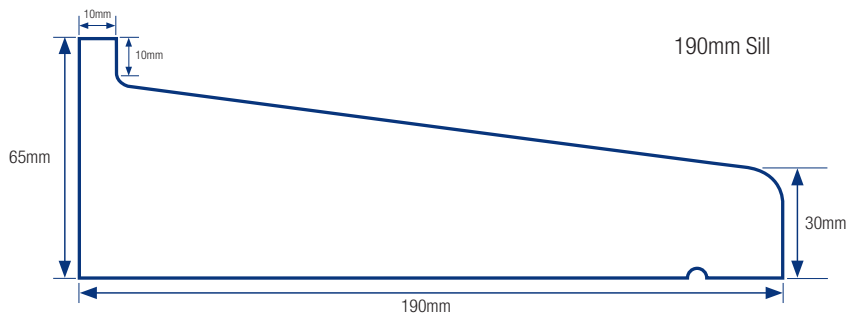
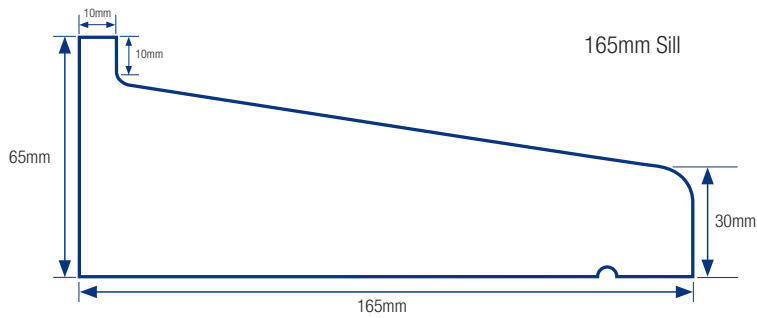
Dark Grey

Brown

Physical information

Width (mm)	Length (mm)	Height (mm - Rear)	Height (mm - Front)
165	1500	65	30
165	900	65	30
190	1500	65	30
190	900	65	30

Typical material density - 2100kg/m³



CMS DANSKIN ACOUSTICS

Scotland Office: Tel: **01698 356000** Fax: **01698 372222**
1 Netherton Road Wishaw ML2 0EQ

Central/Southern Office: Tel: **01925 577711** Fax: **01925 577733**
Unit 2 Lyncastle Road, Appleton, Warrington, WA4 4SN

Email: enquiries@cmsdanskin.co.uk Website: www.externalsills.co.uk

IMPORTANT: Directions for use are given for guidance only and are not intended to form part of any contract. They should be varied or adapted to suit your particular materials or conditions of use. Goods supplied by the company are made to approved standards from the highest quality raw materials but no warranty or guarantee is given as to their suitability for any particular purpose or application, and no liability is accepted for any loss or damage arising directly or indirectly from the use of the Company's products irrespective of any information given to us as to intended use of such products. It is therefore recommended that prospective users should test a sample of this product under their own conditions to satisfy themselves that the product is suitable for the purpose intended.

CMSDANSKIN
ACOUSTICS